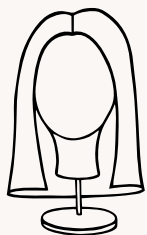




# Wig Care Essentials

## Human Hair Wigs

Visit [www.wigs.co.nz](http://www.wigs.co.nz) for all your wig care essentials



### 01 -Preparation

Secure your wig onto a polyfoam head using fine needles (avoiding the lace front). Gently brush with a wide-tooth wig comb to remove tangles.



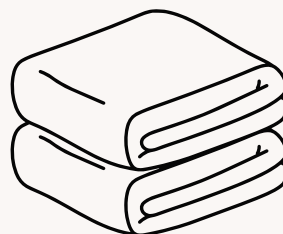
### 02- Shampooing

Wet the wig under lukewarm running water. Apply a small amount of Ellen Wille Human Hair Shampoo and gently work it through the strands from root to tip without scrubbing. Rinse thoroughly.



### 03- Conditioning

Apply the Human Hair Balm for added softness and silkiness. Let it sit before rinsing with lukewarm water. For extra hydration, use the Care 'n Repair Conditioner, which repairs and protects the hair. Every 3–4 washes, use the HH Intensive Recovery Mask to deeply nourish & restore brilliance. Leave it in for 5–10 minutes before rinsing.



### 04 - Drying & Styling

Avoid brushing when wet. Pat dry with a towel and allow the wig to air dry on a wig stand. Once semi-dry, use Ellen Wille's Anti-Static Spray for protection and smoothness before styling. Just a couple of sprays on the strand is needed.

**NOTES:** Do not pull the wig from the polyhead while wet, as this will pull the hair through the cap. Dry with a hairdryer on a polyhead on medium heat until the knots at the base of the wig are dry.

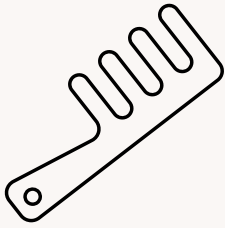
Use the hair straighteners at a heat no higher than 180 degrees Celsius when the hair is dry.



# Wig Care Essentials

## Synthetic Hair Wigs

Visit [www.wigs.co.nz](http://www.wigs.co.nz) for all your wig care essentials



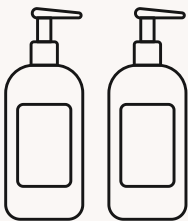
### 01 - De-tangle

Gently remove knots with a wide-toothed comb or wig brush, starting from the ends and working your way up.



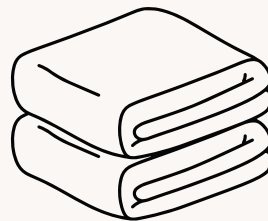
### 02- Shampooing

Fill a bowl or sink with lukewarm water. Add Ellen Wille Synthetic Shampoo, swirl to mix, then submerge the wig. Let it soak for 5–10 minutes before rinsing with clean water.



### 03- Conditioning

Mix lukewarm water with Synthetic Conditioner in a bowl. Let the wig soak for 5–10 minutes. Use the Synthetic Spray Conditioner for extra protection between washes (use sparingly).



### 04 - Drying & Styling

Do not wring, twist, or brush when wet. Instead, pat dry with a towel and place the wig on a wig stand to air dry. Never use heat styling tools on synthetic wigs. Once dry, use Anti-Static Spray to protect against environmental damage and frizz. Shake the wig gently to restore its shape.

**TIPS:** Hair Tip Liquid regenerates and invigorates hair tips. Protects against split ends to bring back vitality. Just put a little onto fingers and work into the fibres that are looking a little lack-lustre to control that frizz and tangle. This product works on all types of wigs/hair fibres.

The Anti-Static Spray is fabulous for protecting the hair. It acts like a protective coat and provides your Human Hair or Synthetic wig/hairpiece with an anti-static, soft and shiny finish. Simply spray a few times and evenly from about 20-30 cm onto dry hair. This Anti-Static spray aims to protect the fibres of your wig/hairpiece for everyday environmental factors and eliminate any static and fly away hairs.