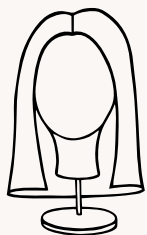




# Wig Care Essentials

## Human Hair Wigs

Visit [www.wigs.co.nz](http://www.wigs.co.nz) for all your wig care essentials



### 01 -Preparation

Secure your wig onto a polyfoam head using fine needles (avoiding the lace front). Gently brush with a wide-tooth wig comb to remove tangles.



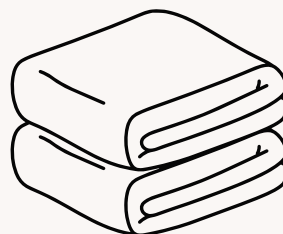
### 02- Shampooing

Wet the wig under lukewarm running water. Apply a small amount of [Ellen Wille Human Hair Shampoo](#) and gently work it through the strands from root to tip without scrubbing. Rinse thoroughly.



### 03- Conditioning

Apply the [Human Hair Balm](#) for added softness and silkiness. Let it sit before rinsing with lukewarm water. For extra hydration, use the [Care 'n Repair Conditioner](#), which repairs and protects the hair. Every 3–4 washes, use the [HH Intensive Recovery Mask](#) to deeply nourish & restore brilliance. Leave it in for 5–10 minutes before rinsing.



### 04 - Drying & Styling

Avoid brushing when wet. Pat dry with a towel and allow the wig to air dry on a wig stand. Once semi-dry, use Ellen Wille's [Anti-Static Spray](#) for protection and smoothness before styling. Just a couple of sprays on the strand is needed.

**NOTES:** Do not pull the wig from the polyhead while wet, as this will pull the hair through the cap. Dry with a hairdryer on a polyhead on medium heat until the knots at the base of the wig are dry.

Use the hair straighteners at a heat no higher than 180 degrees Celsius when the hair is dry.